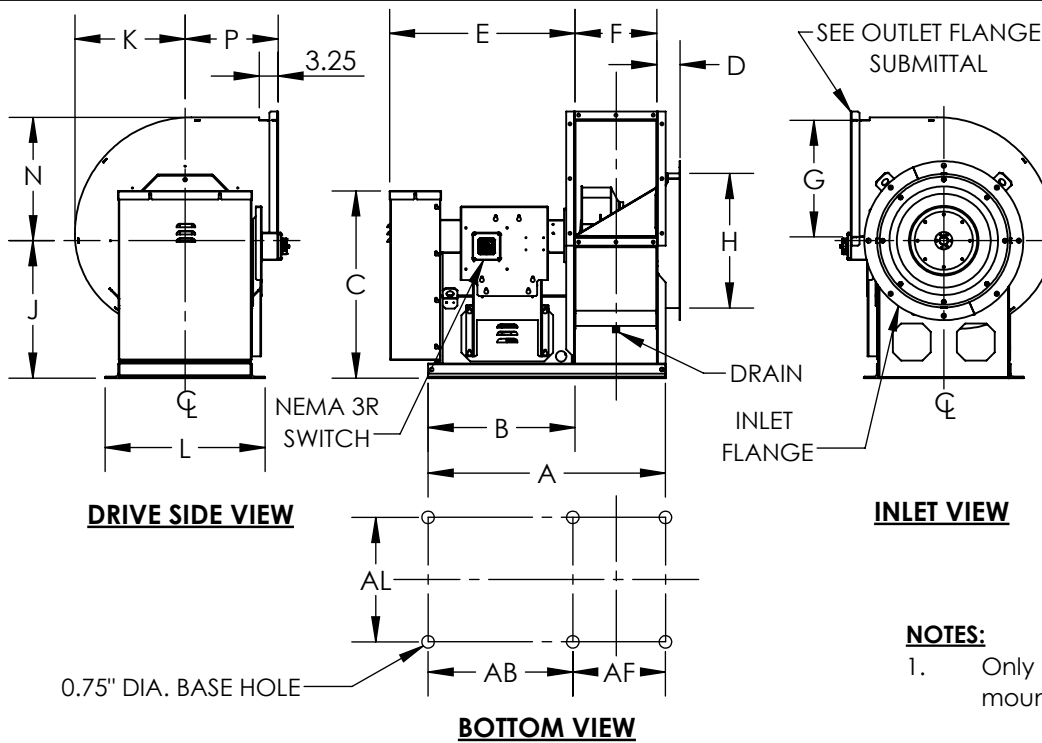




DATE: TAG:  
 JOB:  
 PROJECT:  
 COMPANY:  
 SALES PERSON:

UVS2, CLASS-2, ARRANGEMENT-10  
 UTILITY VENT SET FOR UL GREASE EXHAUST (500F), SIZES 122-365



**STANDARD CONSTRUCTION:**

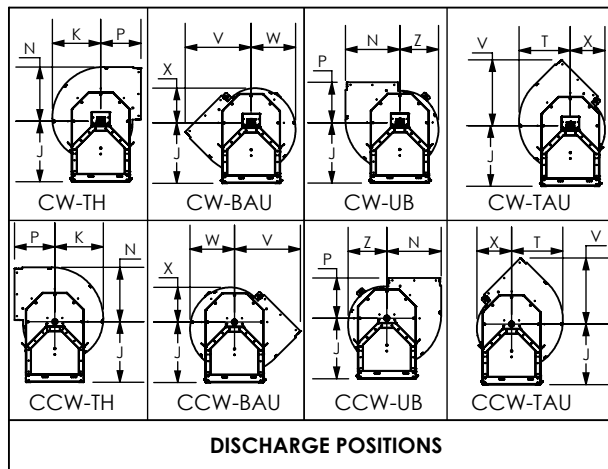
1. Steel Wheel
2. Welded Pedestal
3. Weather Cover
4. Pre-wired NEMA 3R Switch
5. Housing Drain 3/4" NPT
6. Access Door (Bolted or Hinged)
7. Flanged Inlet and Outlet
8. Shaft Seal (Ceramic)
9. Heat Slinger
10. High Temperature Paint

**OPTIONAL ACCESSORIES:**

1. Outlet Stack
2. Grease Containment with optional Absorbent
3. Extended Lube Lines

**NOTES:**

1. Only holes at corners are required for mounting



**DIMENSIONAL DATA**

| Size | A     | B     | C     | D    | E     | F     | G     | H     | J     | K     | L     | N     | P     | T     | V     | W     | X     | Z     | AL    | AB    | AF    | MAX. WT. (lbs) | MAX. RPM | MAX. MTR. |
|------|-------|-------|-------|------|-------|-------|-------|-------|-------|-------|-------|-------|-------|-------|-------|-------|-------|-------|-------|-------|-------|----------------|----------|-----------|
| 122  | 32.00 | 20.62 | 24.94 | 4.13 | 25.25 | 9.88  | 13.06 | 16.75 | 18.00 | 12.88 | 24.00 | 14.38 | 13.50 | 13.63 | 19.19 | 11.81 | 9.25  | 10.31 | 22.00 | 19.12 | 9.88  | 238            | 4700     | 1847      |
| 135  | 33.00 | 20.62 | 25.31 | 4.13 | 25.25 | 10.88 | 14.38 | 18.38 | 18.38 | 14.19 | 24.00 | 15.81 | 14.25 | 15.00 | 20.75 | 13.00 | 10.19 | 11.38 | 22.00 | 19.12 | 10.88 | 249            | 4300     | 2157      |
| 150  | 34.19 | 20.63 | 26.94 | 4.13 | 25.25 | 12.06 | 15.88 | 20.38 | 20.00 | 15.69 | 24.00 | 17.56 | 14.75 | 16.63 | 22.31 | 14.38 | 11.25 | 12.56 | 22.00 | 19.13 | 12.06 | 272            | 3850     | 2157      |
| 165  | 40.00 | 25.25 | 28.56 | 4.13 | 29.88 | 13.25 | 17.56 | 22.38 | 21.63 | 17.19 | 26.50 | 19.25 | 15.50 | 18.19 | 24.06 | 15.75 | 12.31 | 13.75 | 24.50 | 23.75 | 13.25 | 343            | 3500     | 2157      |
| 182  | 40.81 | 25.25 | 32.19 | 4.13 | 31.88 | 14.06 | 20.06 | 23.13 | 23.63 | 18.94 | 27.50 | 21.19 | 16.00 | 20.06 | 25.75 | 17.31 | 13.56 | 15.13 | 25.50 | 23.75 | 14.06 | 374            | 3000     | 2157      |
| 200  | 42.13 | 25.25 | 34.31 | 4.13 | 31.87 | 15.38 | 22.00 | 25.25 | 25.75 | 20.69 | 30.00 | 23.19 | 17.25 | 21.94 | 28.06 | 18.94 | 14.81 | 16.56 | 28.00 | 23.75 | 15.38 | 447            | 2750     | 2567      |
| 222  | 43.88 | 25.25 | 36.81 | 4.13 | 31.87 | 17.13 | 24.50 | 28.00 | 28.25 | 23.00 | 32.00 | 25.75 | 18.75 | 24.38 | 30.94 | 21.06 | 16.44 | 18.38 | 30.00 | 23.75 | 17.13 | 505            | 2450     | 2567      |
| 245  | 49.00 | 28.75 | 40.94 | 4.13 | 35.38 | 18.75 | 27.00 | 30.88 | 30.75 | 25.25 | 34.00 | 28.25 | 20.25 | 26.75 | 33.81 | 23.13 | 18.00 | 20.13 | 32.00 | 27.25 | 18.75 | 583            | 2200     | 2867      |
| 270  | 53.13 | 31.00 | 43.94 | 4.13 | 37.62 | 20.63 | 29.75 | 33.88 | 33.75 | 27.75 | 37.50 | 31.13 | 22.25 | 29.44 | 37.19 | 25.44 | 19.81 | 22.19 | 35.50 | 29.50 | 20.63 | 679            | 2000     | 3247      |
| 300  | 56.00 | 31.00 | 50.50 | 4.13 | 39.00 | 23.00 | 32.88 | 37.69 | 37.63 | 30.81 | 40.50 | 34.56 | 24.13 | 32.69 | 40.94 | 28.25 | 21.94 | 24.63 | 38.50 | 29.00 | 24.00 | 1012           | 1800     | 3247      |
| 330  | 58.25 | 31.00 | 53.88 | 4.13 | 39.00 | 25.25 | 36.19 | 41.44 | 41.00 | 33.81 | 44.00 | 37.94 | 26.50 | 35.88 | 45.00 | 30.94 | 24.13 | 27.00 | 42.00 | 29.00 | 26.25 | 1143           | 1650     | 3267      |
| 365  | 60.88 | 31.00 | 60.69 | 4.13 | 39.00 | 27.88 | 40.06 | 45.81 | 45.00 | 37.31 | 47.50 | 41.94 | 29.25 | 39.63 | 49.75 | 34.19 | 26.63 | 29.81 | 45.50 | 29.00 | 28.88 | 1314           | 1490     | 3267      |

ALL DIMENSIONS ARE IN INCHES, WEIGHTS ARE APPROXIMATE AND DOES NOT INCLUDE DRIVES OR ACCESSORIES.

|           |       |           |
|-----------|-------|-----------|
| REVISION: | FORM: | REPLACES: |
|-----------|-------|-----------|